

/

Analytical Geographical Study of Localities in Jenin Governorate

2009 -

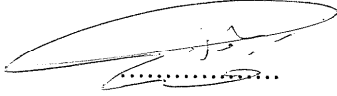
دراسة تحليلية جغرافية لخصائص التجمعات
السكانية في محافظة جنين

Analytical Geographical Study of Localities
in Jenin Governorate

إعداد الطالبة
احتساب فهمي حسن عبيدي

تاريخ مناقشة الرسالة: 2009 /2 /21

التوقيع



لجنة المناقشة:

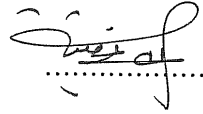
د. حسين الريماوي

(رئيساً)



د. أحمد حماد

(عضواً داخلياً)



د. أحمد غضبيه

(عضواً داخلياً)

" قدمت هذه الرسالة استكمالاً لمتطلبات درجة الماجستير في الدراسات العربية المعاصرة
تركيز جغرافيا من كلية الدراسات العليا في جامعة بيرزيت، فلسطين "

2009 م

i

.

.

.

.

.

J.

...

...

.

.

-

-

.

) ()

-

.

(

-

-

.

-

.

...

1

2

2

5

6

8

8

9

10

10

13

14

18

18

19

22

25

30

33

36

36 (2006 -1922)

40 -1922)

(2006

42

1997

43

45

85

85

85

88

89

•

26	(/)	1
27	()	2
28	(%)	3
29	()	4
33		5
39		6
	2006 -1922	
41		7
	2006 -1922	
42	(2006-2001)	8
43		9
45		10
46	-	11
	1997	
47		12

51		13
52	1997 -	14
53		15
55	1997 -	16
57		17
59		18
	1997 -	
59		19
60		20
	2004 -	
61		21
62		22
	2004 -	
64		23
68		24

69			25
		(2005 - 1997)	
72			26
		2005 -	
73			27
75			28
		(2005 - 1997)	
79	Arc	(Average Nearest Neighbor)	29
		Map 9.1	
83			30
		(Moran's Index)	
		/1997 -	

τ

48	1
48	2
49	3
50	4
50	5
56	6
65	7

3			1
4			2
7	1997		3
35			4
38	1948		5
66			6
		1997	
67			7
		2005	
70			8
		1997	
71			9
		2005	
76			10
		2005-1997	

ي

)

(

.

.

.

:

.

.

.

Abstract

This study illustrates the similarities and differences in demographic and economic properties between localities in the Jenin governorate. The demographic characteristics which are tackled are gender, age groups and educational levels. Furthermore, the economic characteristics analyzed are status of activities and number of establishments. These analyses are made possible by using analysis of variance (One Way Anova). The spatial patterns for localities are studied by using nearest neighbor analysis technique and other statistics such as Moran's I in order to determine the autocorrelation between localities in terms of population. Results of this study have shown that localities are similar in terms of the number of workers. However, such localities are differentiated by means of number of workers in the private sector, availability water and sewage waste network. Statistical techniques have proved a random distribution of localities, but in terms of population size the localities revealed a cluster pattern. This area needs more study, to be carried out using recent census data in Jenin and other parts of Palestine. A number of recommendations have been put in order to reduce dependency ratio, to present infrastructures for all localities, and making more studies using censuses data for more analysis and changes in localities.

1

2005

1997

2004

(

)

.1997

.

.

(2006 -1922)

.

:

96

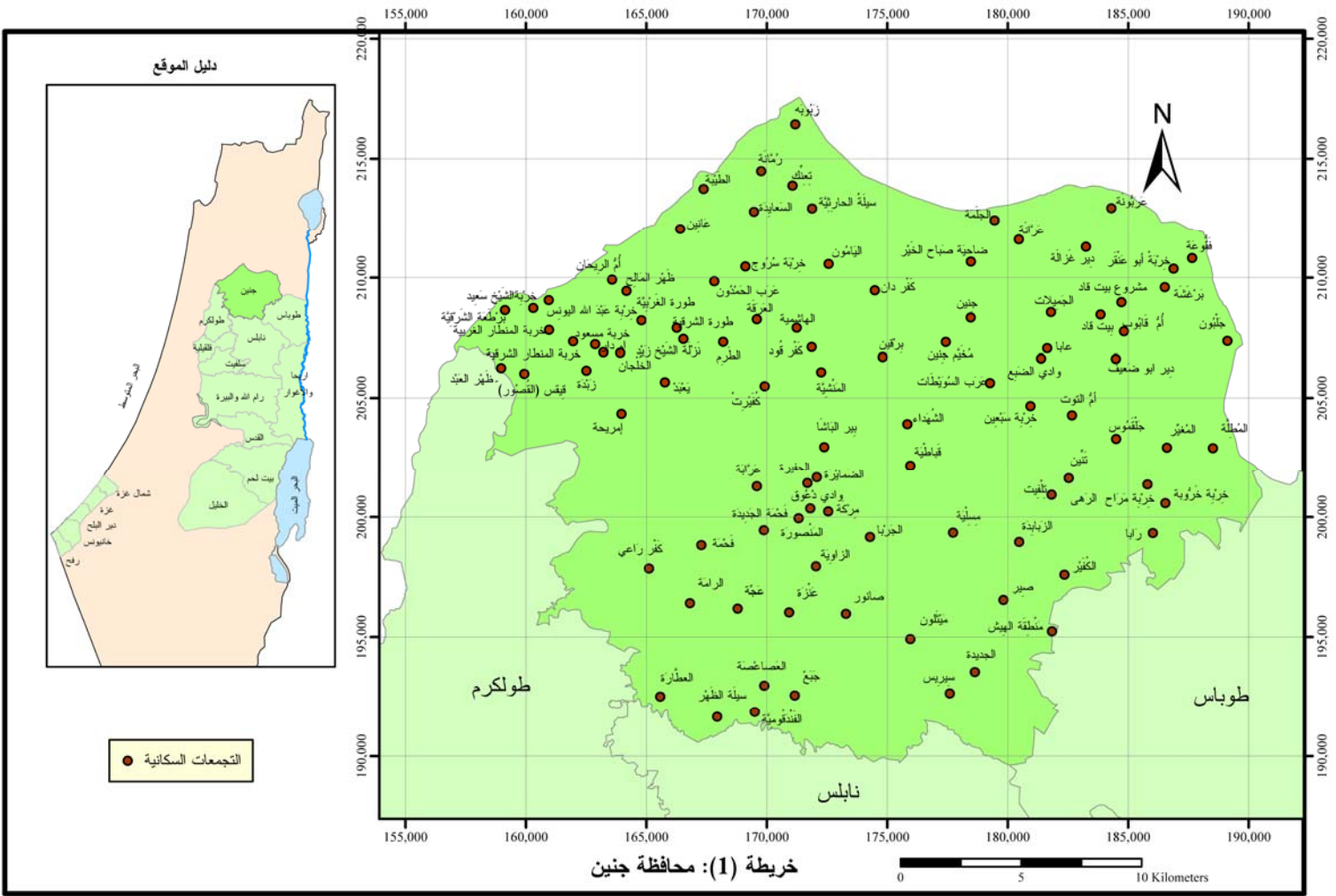
1997

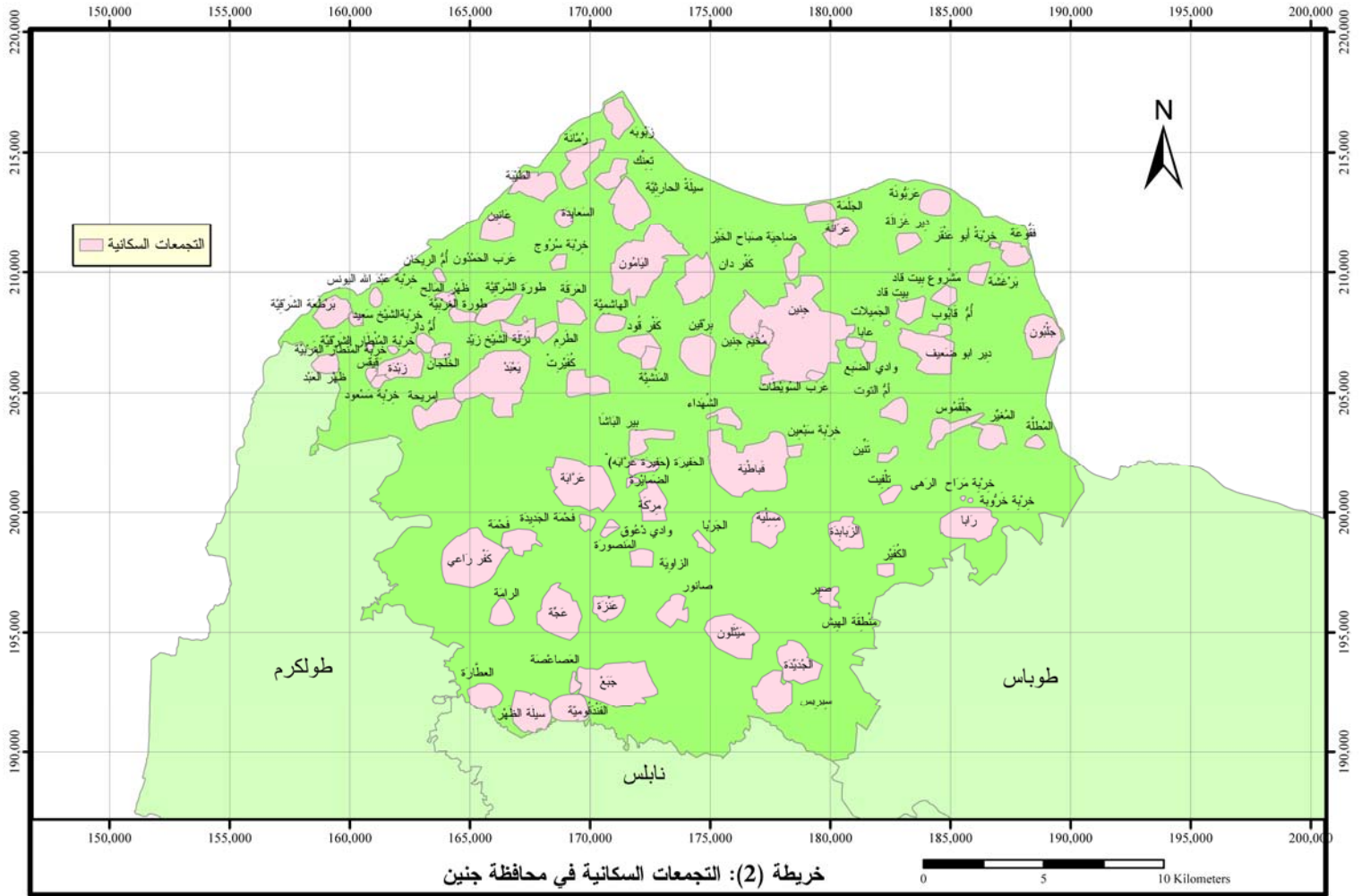
:

96

.(1)

.(2)





583
 261,756 . 203,026 1997
 .2006

431.1

2005

1948

9,104

2006

12,210

1997

) 1997

56,123

.(41,151

1999

:

)

(

.1997

2000

4000 -2001

6000 -4001

(3)

6000

:

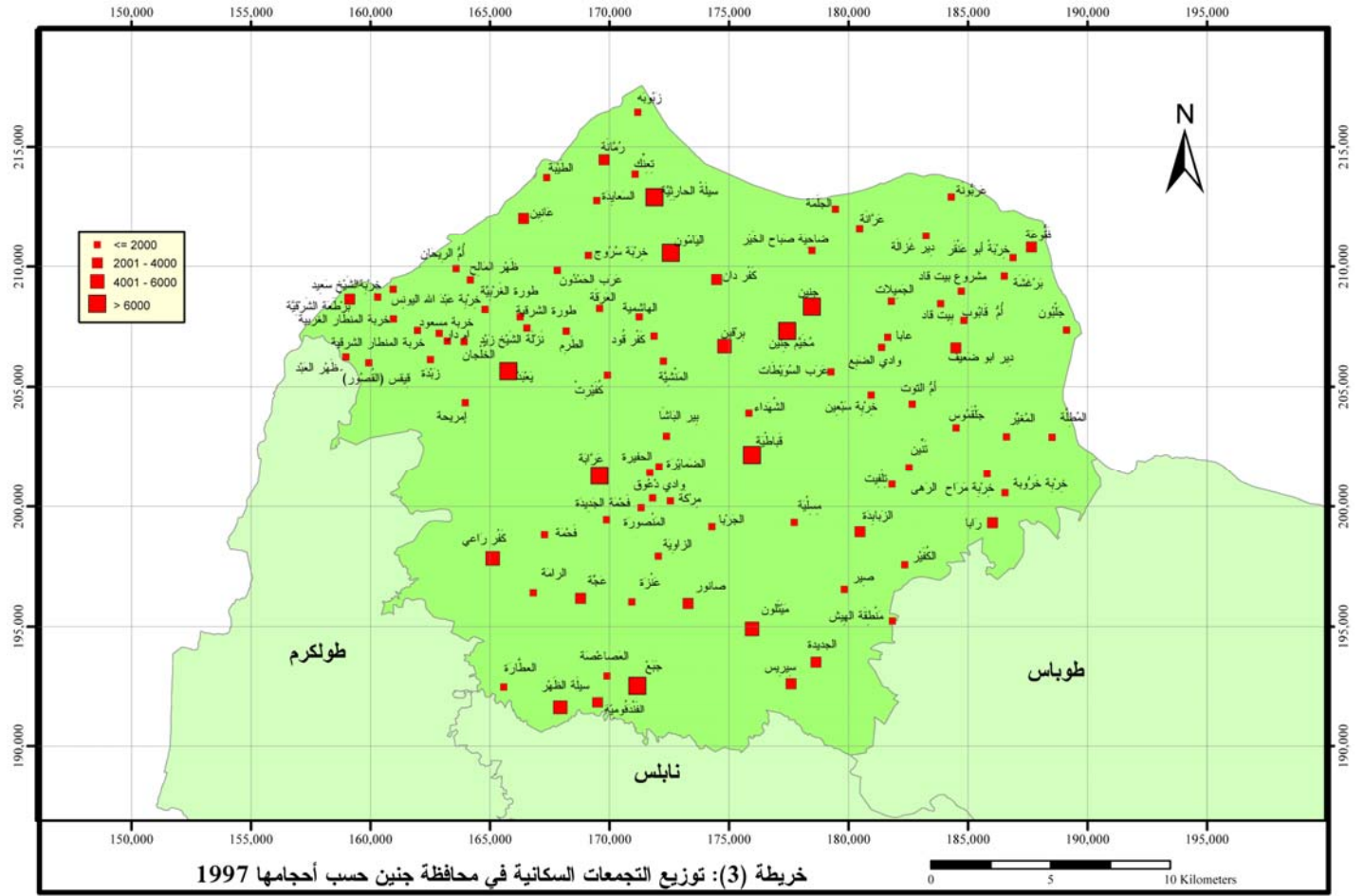
:

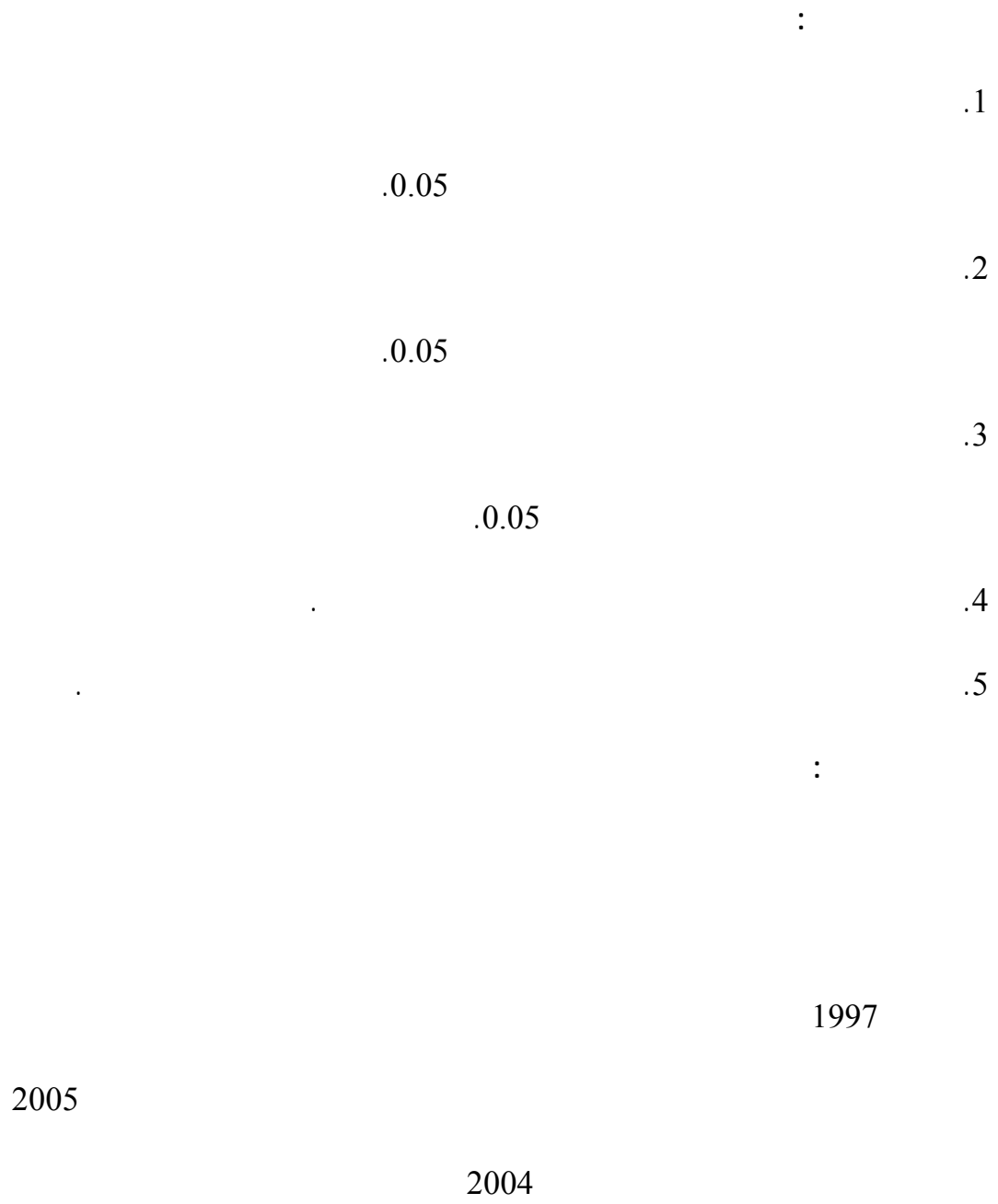
.1

.2

.3

.4





:

:

SPSS

Arc Map 9.1

:

(Spatial Autocorrelation)

(Average Nearest Neighbor)

.(Moran's Index)

:

(1982)

.1970 -1900

(1987)

.1981 -1960

(2001)

15

(%88)

%80.4

(1.35)

(%81.3)

.(%96.8)

.(%99.7)

(2002)

1997

(2003)

1997 -

.()

-

6

54

()

360000

2004 / 1425

(2005)

2004 / 1425

.(Arc View 3.2)

()

(Pedersen, 1997)

(Morill, 1993)

:

18

)

.(

(Shukri & Alshuwaikhat,1996)

1987

.(Pareto coefficients)

(Ehrlich & Gyourko, 2000)

(1995-1910)

.

.

1950

.

.

.

(Song & Zhang, 2002)

1998 -1991

Pareto -)

(law

(Garmestani, Allen and Bessy, 2005)

(Clusters)

1990 -1890

(Kernel density)

()

7-4

:

32.33 32.17

210,000 -190,000

35.30 35.00

.(2)

190,000 -150,000

25

. 43

50

()

-

.(152- 151 1990)

:

: .1

:

:

()

19

40

351

.(42 2003)

100

125

(5) 175

.(22 1964)

.(152 1990)

250

:

22 1964)

.(27 1991

350

:

." "

.(28 1991)

: .2

5

500-400

. 200-150

100

. 50

175

%15-10

764

.(153-152 1990) 500 -300

: .3

6 3

%.35 30

.(153 1990) 6

.(23 1964)

:

) (Terra Rossa)

.(26 1964

:

.1

.() .2

.3

.(153 1990)

-

()

()

() . ()

)

.(29 -28 1964

:

.(17 1990)

20

.(12 1990) .

: .1

:

.(28 1929)

(1) .(18 .)

(/) : (1)

7.5	6.1	5.4	7.2	8.6	9.7	9.4	9.0	7.9	7.9	7.9	7.5	

[.http://www.pmd.ps/ar/climateaverage.htm](http://www.pmd.ps/ar/climateaverage.htm) . - :
 .2009 /5 /20

/ 5.4

/ 9.7

)

.(66 1999

: .2

5

.(19 1990)

(2)

12.1

27.6

:(2)

13.7	18.4	23.3	26.5	27.6	26.6	25.1	22.5	19.7	15.1	12.6	12.1	

.http://www.pmd.ps/ar/climateaverage.htm .

-

:

.2009 /5 /20

: .3

%65 57

. 151

(3) .(19 1990)

.%60

%80

(%)

:(3)

74	66	65	64	65	63	63	60	67	76	84	80	

.http://www.pmd.ps/ar/climateaverage.htm .

-

:

.2009 /5 /20

: .4

.(20 1990)

600

500

5

.(33 1964) 400

() :(4)

93	40	16	0	0	0	0	6	25	65	62	107	

.http://www.pmd.ps/ar/climateaverage.htm .

-

:

.2009 /5 /20

(4)

40

. 107

. 93

25

62

()

:

.(139-133 1996)

“ ” “ ”

.1948

1949-1948

.(189-141 1996)

:

. : .1
200 : .2

300

1948

. : .3
. : .4
. : .5
. 130 : .6
. : .7
. () : .8
. : .9

14 .10

-

1921

-

.(171-196 1996)

:

%63 (5)

400 400 > 200

%50 %54

400 %50 400 > 200

%50 (5)

%37.5 400 > 200

200

:(5)

		400		400 > 200		200 > 0	
71	%21	15	%63	44	%17	12	
13	%54	7	%31	4	%15	2	
4	%50	2	%50	2	%0	0	
8	12.5 %	1	%50	4	%37.5	3	
96	%26	25	%56	54	%18	17	

.2000 - .1 / :

%56

(4)

400

400

400

200

200

:

400 -200

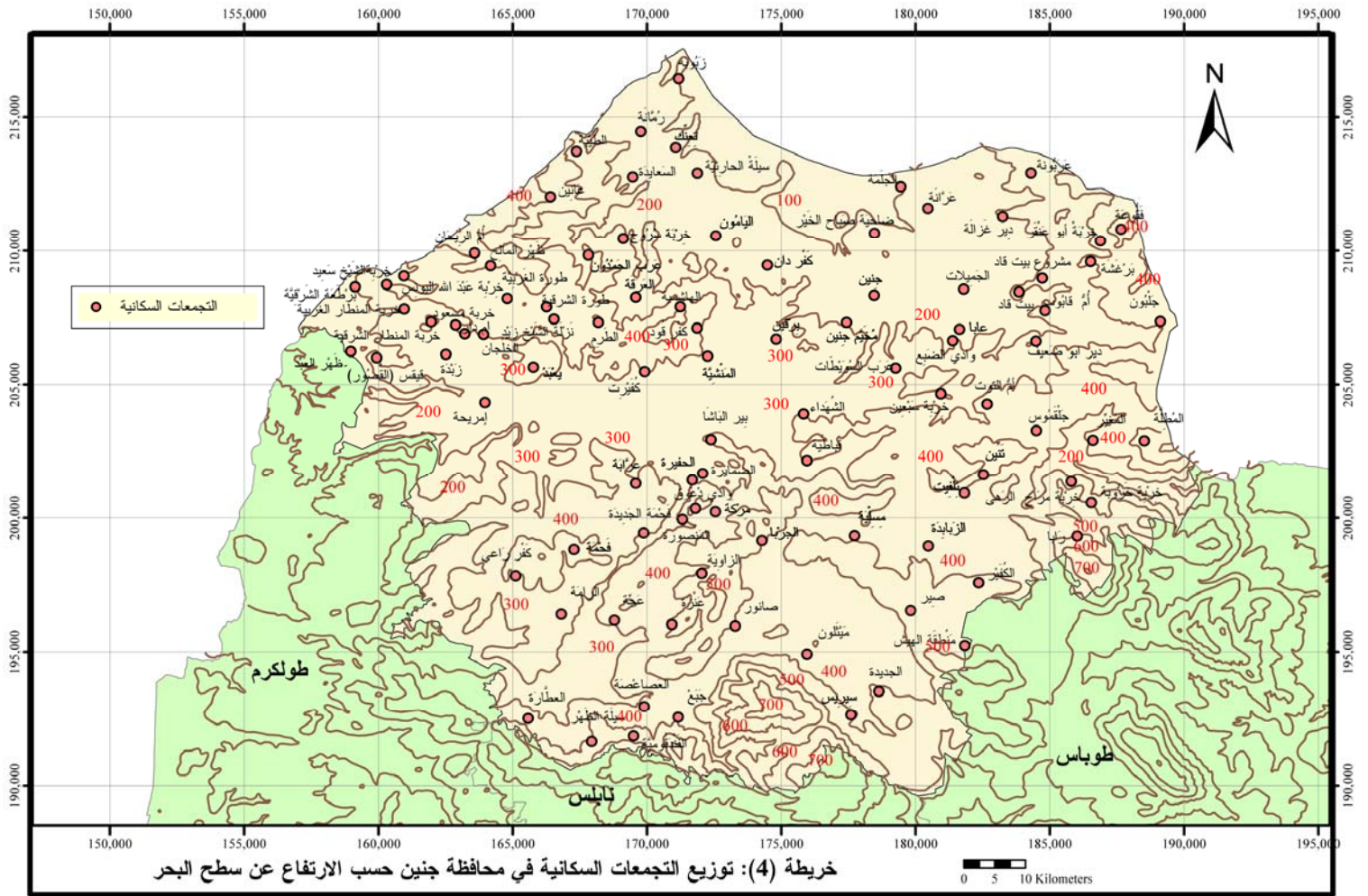
.1

400

400 -200

.2

. 200



خريطة (4): توزيع التجمعات السكانية في محافظة جازن حسب الارتفاع عن سطح البحر

الخصائص البشرية لمنطقة الدراسة:

:(2006 - 1922)

1922

1931

.1961

) 1987 (139,17,16

.1997

.2006 - 1922

2000

(6)

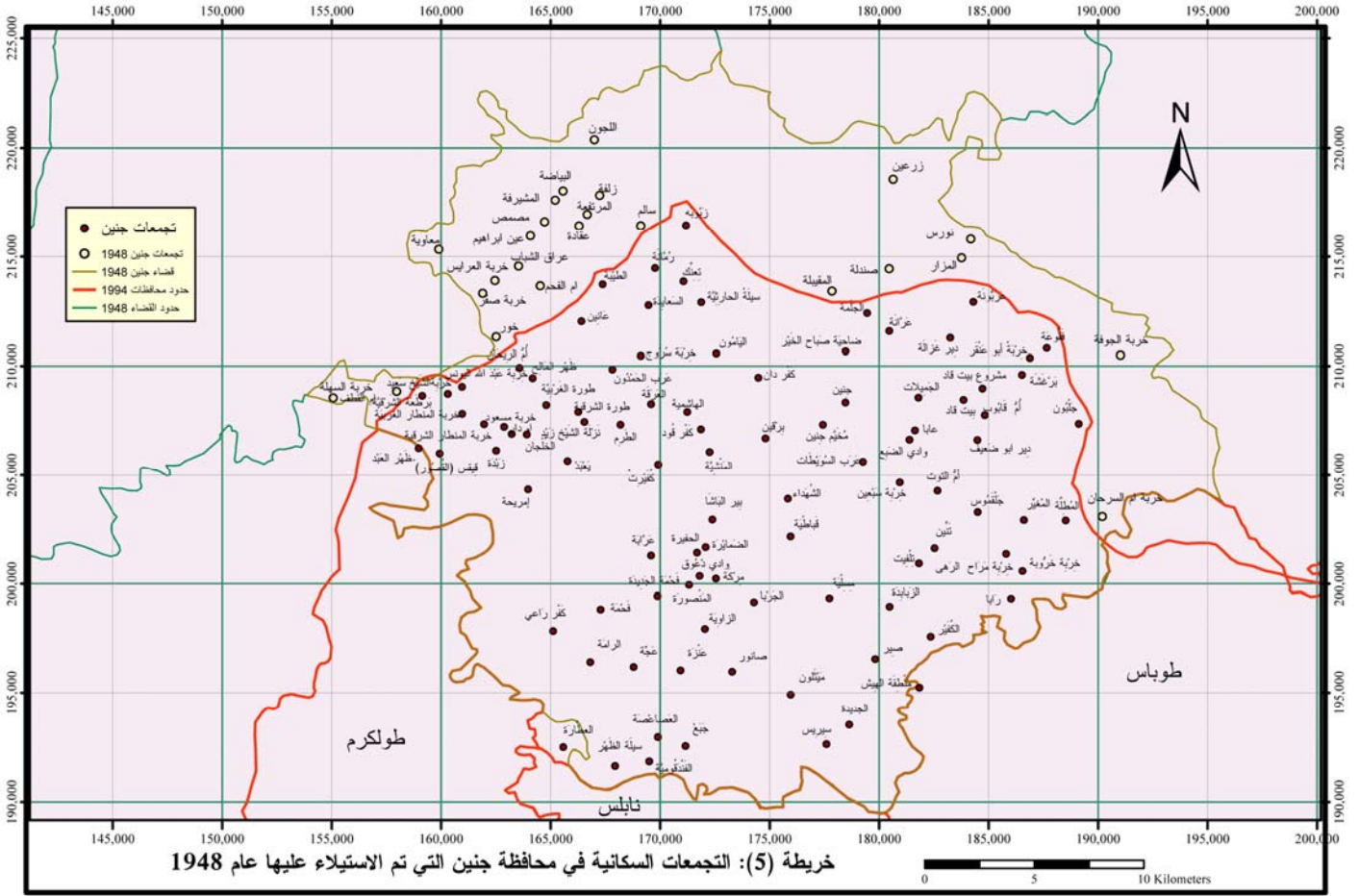
1922 %95.5

1961 1945 %80 %86 1931 %93

%74

. 2006 1997 %62.5

1948



2006 -1922

:(6)

	2006		1997		1961		1945		1931		1922		
%62.5	60	%74.0	71	% 80.7	46	% 86	56	% 92.8	65	%95.5	64		
												2000	
%18.8	18	%13.5	13	% 10.5	6	% 12	8	% 7.2	5	%4.5	3	-2001	
												4000	
%7.3	7	%4.2	4	% 7	4	% 1.5	1	-	-	-	-	-4001	
												6000	
%11.5	11	%8.3	8	% 1.8	1	-	-	-	-	-	-	6000	
	96		96		57		65		70		67		

:

Greek convent and Goldberg- presses : .(1932) .1931 .1

.136-123 () : - .(1999) . .2

-8 /1962 18 .(1963) . .3

Palestinian Central Bureau of Statistics. Projected Mid- Year Population Territory by Governorate (2001-2006) .4

Survey of Palestine, 1945, 1946, Anglo- American Inquiry Committee. Palestine .5

خلال الأعوام (1922 - 2006):

(7)

Year	Percentage
1922	70%
1931	49.2%
1945	37%
1961	78.2%
1922 - 1931	10.6%
1922 - 1945	20.4%
1922 - 1961	48.6%
1922 - 2006	56.8%
1945 - 1922	21.8%
1945 - 1961	30%
1945 - 2001	50.8%
1948	24.8%
1961	18%
2006	6000

2006 -1922

:(7)

	2006		1997		1961		1945		1931		1922	/	
%10.6	27817	%20.4	39742	% 37	29313	% 49.2	23840	% 70	29125	% 78.2	25166	2000	
%18.9	49406	%20.7	40395	% 19.9	15760	% 50.8	24570	% 30	12479	% 21.8	7024	4000-2001	
%13.6	35640	%10.3	20075	% 24.8	19664	-	-	-	-	-		6000-4001	
%56.8	148355	%48.6	94862	% 18	14402	-	-	-	-	-		6000	
	261218		195074		79139		48410		41604		32190		

1276 2006

23

:

:

Greek convent and Goldberg- presses : .(1932) .1931 .1

.136-123 () : - .(1999) .2

-8 /1962 18 .(1963) .3

Palestinian Central Bureau of Statistics. Projected Mid- Year Population Territory by Governorate (2001-2006) .4

Survey of Palestine, 1945, 1946, Anglo- American Inquiry Committee. Palestine .5

:1997

(99,619)	(103,407)	203,026	1997
%39.2			
)		%56.1	%4.7
		.(41	1999
	246,685	2004	
(8)		2006 2005	261,756 254,218

(2006-2001)

:(8)

2006	2005	2004	2003	2002	2001	
261,756	254,218	246,685	239,143	231,601	224,090	

Palestinian Central Bureau of Statistics. Projected Mid- Year Population Territory by Governorate:

(2001-2006).http://www.pcbs.gov.ps/Portal/_pcbs/populati/demd1.aspx. Date

Retrieved 1,2008

:

)

1997

2000

.(

4000 -2001

6000 -4001

.(3)

6000

%74.0 (9)

%8.3

%4.2

%13.5

:(9)

74.0	71	
13.5	13	
4.2	4	
8.3	8	
100.0	96	

(3)

:

.SPSS

:

.(One-Way Anova)

:

 $(\alpha \leq 0.05)$

.1

()

:(10)

مستوى المعنوية	اختبار	المتوسط*	المتغيرات المستقلة "حجم التجمع"	المتغير التابع
α	F	Mean		
0.949	0.119	50.666		
		51.287		
		50.752		
		50.628		
		50.751		

*

()

F

(2.7004)

F

(0.119)

(95)

($\alpha \leq 0.05$)

0.05

0.949

α

(11)

%49

%51

%2

1997 -

:(11)

		% /		% /		
%20	39,742	49	19,355	51	20,387	
%21	40,395	49	19,674	51	20,721	
%10	20,075	49	9,886	51	10,189	
%49	94,862	49	46,755	51	48,107	
%100	195,074	49	95,670	51	99,404	

.() : - .(1999) . :

:(12)

مستوى المعنوية	اختبار	المتوسط*	المتغيرات المستقلة "حجم التجمع"	المتغير التابع
α	F	Mean		
0.680	0.505	41.599		
		44.271		
		44.074		
		44.216		
		42.282		

(4 -0)

*

()

F

(2.7004)

F

(0.505)

 α

(95)

 $(\alpha \leq 0.05)$

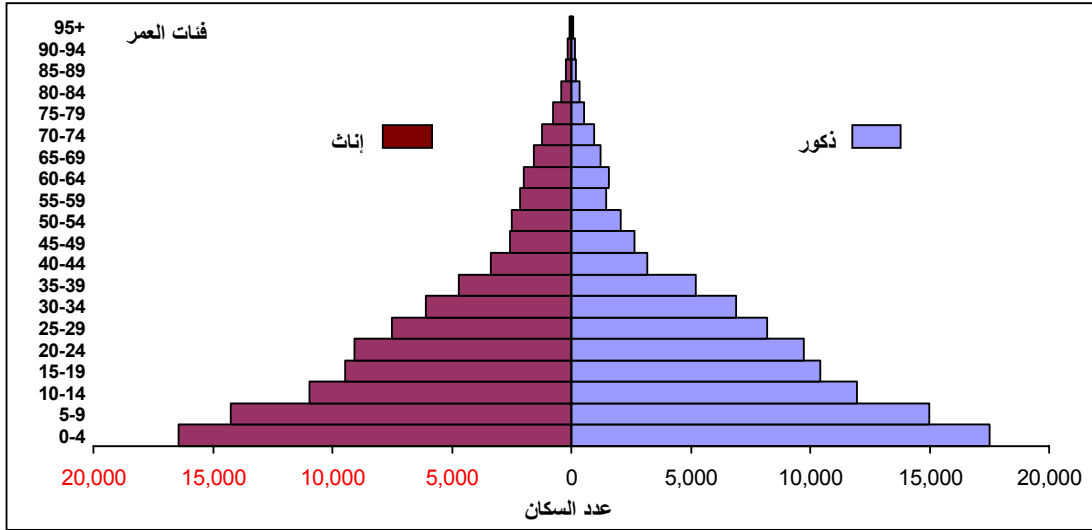
0.05

0.680

:

()

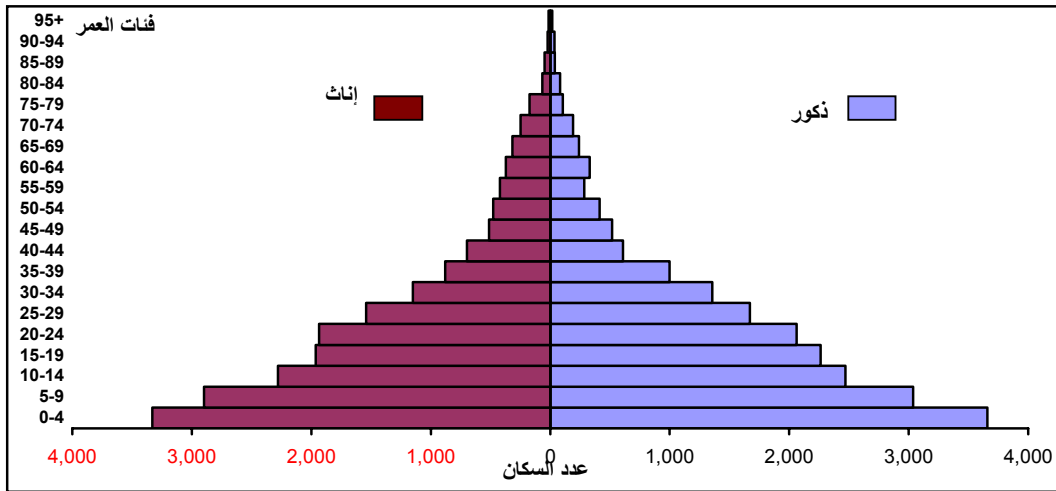
: (1)



)

(

: (2)



(44 - 40)

39

(89 - 85)

(84 - 80)

74

.(2)

95

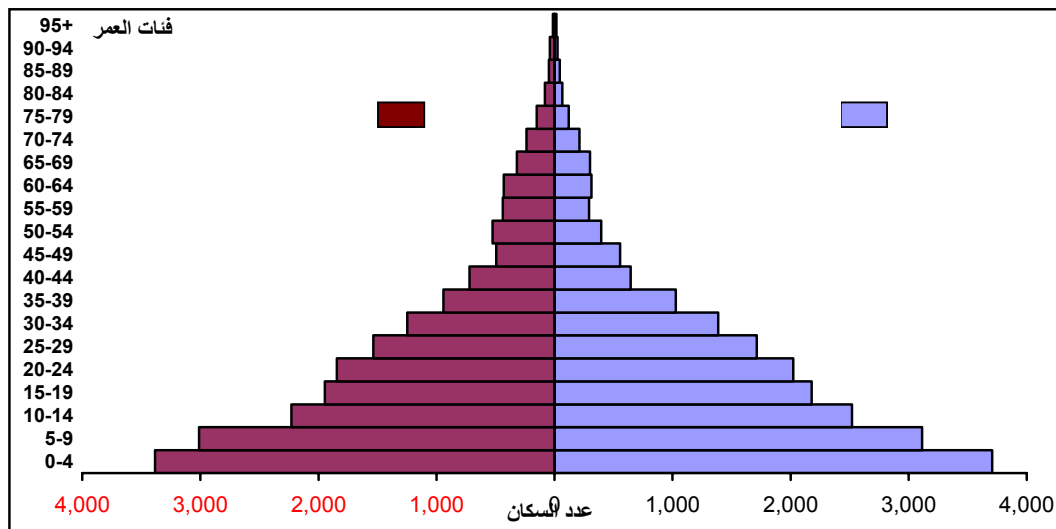
39

(3)

. 94

(44 - 40)

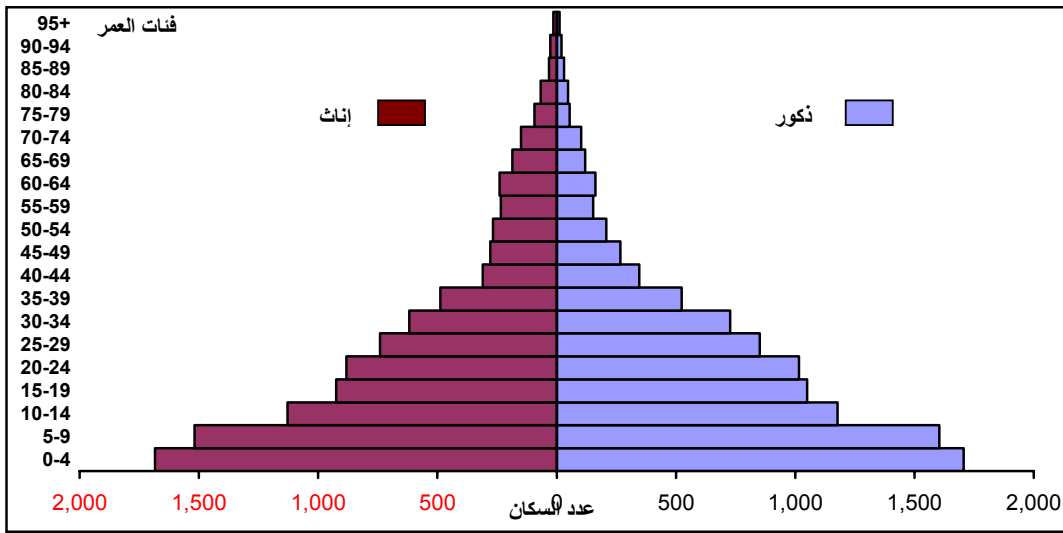
:(3)



(4)

95 (49 - 45) 44

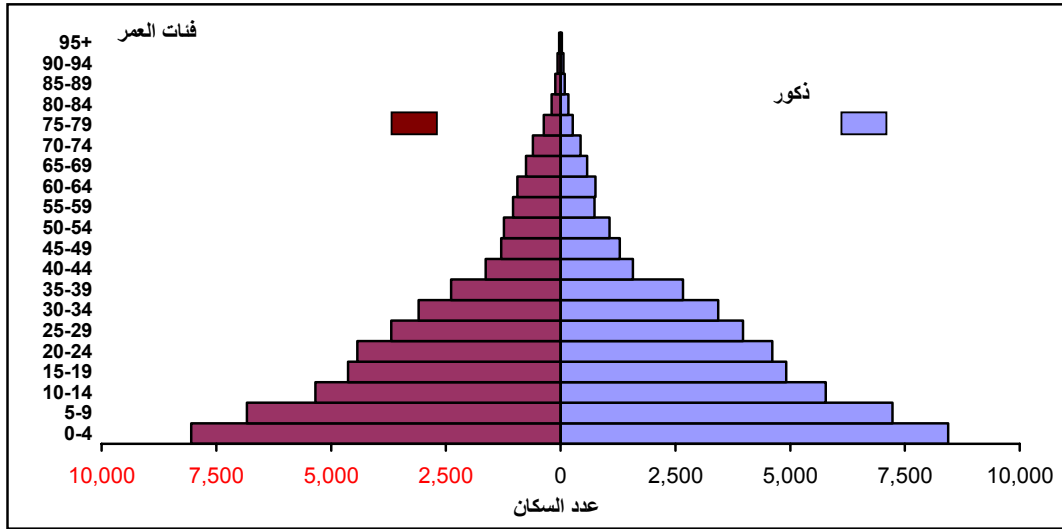
:(4)



(5)

95 (44 - 40) 39

:(5)



(9-5)

(4 - 0)

(95+)

:(13)

مستوى المعنوية	اختبار	المتوسط*	المتغيرات المستقلة "حجم التجمع"	المتغير التابع
α	F	Mean		
0.492	0.810	4.068		
		4.715		
		5.353		
		5.354		
		4.316		

*

()

F

(2.7004)

F

(0.810)

α

(95)

($\alpha \leq 0.05$)

0.05

0.492

)

(

1997 -

:(14)

11.7	10.6	12.0	12.0	13.8	
16.9	16.7	17.0	16.5	17.8	
28.6	28.6	27.4	28.3	29.6	
23.6	23.3	24.4	25.6	22.0	
10.5	11.5	10.5	9.6	9.2	

4.5	4.9	4.3	4.0	4.2	
2.9	3.2	3.2	2.5	2.5	
0.1	0.1	0.1	0.0	0.1	
0.3	0.3	0.3	0.2	0.2	
0.1	0.1	0.1	0.0	0.0	
100.0	100.0	100.0	100.0	100.0	

) : - .(1999) .

:
.136-123

(14)

%13.8 -10.6

.%10.6

(14)

(%2.5)

(%3.2)

:(15)

مستوى المعنوية	اختبار	المتوسط*	المتغيرات المستقلة "حجم التجمع"	المتغير التابع
α	F	Mean		
0.992	0.033	33.030		
		33.347		
		33.275		
		33.410		
		33.115		

*

()

(15)

F

(2.7004)

F

(0.033)

 α

(95)

 $(\alpha \leq 0.05)$

0.05

0.992

)

(

%40.2 (16)

%39.4

(%42.6

%57.4)

%58.0)

%39.5 (%42.9

%57.1)

(%46.0 %56.0) %39.5 (%42.0
 .%39.6

1997 - :(16)

100.0	0.3	3.8	0.4	52.8	2.4	40.2		
	48.6	7.0	17.3	49.6	54.0	57.4		
	51.4	93.0	82.7	50.4	46.0	42.6		
100.0	0.2	4.0	0.5	53.5	2.5	39.4		
	71.2	7.4	21.6	49.8	53.6	57.1		
	28.8	92.6	78.4	50.2	46.4	42.9		
100.0	0.3	4.8	0.5	53.0	1.9	39.5		
	40.6	6.9	15.4	49.8	55.4	58.0		
	59.4	93.1	84.6	50.2	44.6	42.0		
100.0	0.2	4.3	0.6	53.4	2.0	39.5		
	47.8	7.1	19.9	49.8	53.9	56.0		
	52.2	92.9	80.1	50.2	46.1	44.0		
100.0	0.2	4.2	0.5	53.3	2.2	39.6		

.(1999) .

		%52.8	(16)			
%53.5			(%50.4	%49.6)	
	%49.8)	%53.0	(%50.2	%49.8)	
.(%50.2	%49.8)		%53.4	(%50.2

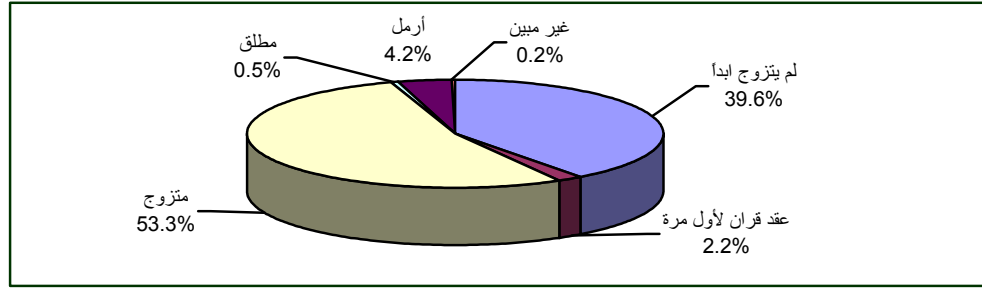
%21.6

%15.4

%78.4

%84.6

:(6)



(6)

%53.3

%39.6

%0.5

15

%44.1

 $(\alpha \leq 0.05)$

.2

:(17)

مستوى المعنوية	اختبار	المتوسط*	المتغيرات المستقلة "حجم التجمع"	المتغير التابع
α	F	Mean		
0.986	0.049	21.185		
		20.415		
		20.263		
		20.954		
		21.023		

*

	F		F
	(2.7004)		(0.049)
α		(95)	($\alpha \leq 0.05$)
		0.05	0.986
()			()
(%10.8)		(18)	(%89.2)
	(.328 1987)		
(%91.5)			
	(%87.8)	(%90.8)	
%8.5			
	%12.2	9.2	

:(18)

1997 -

عدد العاملين		العاملين إناث		العاملين ذكور		
19.9	8,124	8.5	693	91.5	7,431	
20.2	8,248	9.2	758	90.8	7,490	
10.0	4,074	12.2	498	87.8	3,576	
49.9	20,392	12.2	2,479	87.8	17,913	
100.0	40,838	10.8	4,428	89.2	36,410	المجموع

) : - .(1999) :

.150-137

:(19)

مستوى المعنوية	اختبار	المتوسط*	المتغيرات المستقلة "حجم التجمع"	المتغير التابع
α	F	Mean		
0.0002	18.571	025.048		
		149.385		
		208.000		
		688.625		
		112.057		

*

(18.571) F

 $(\alpha \leq 0.05)$

(2.7004)

F

0.0002 α

(95)

0.05

(20)

%55.8

%16.1

%19.7

%8.4

:(20)

2004 -

عدد المنشآت_2004		حجم التجمع
% /		
16.1	1,584	
19.7	1,942	
8.4	832	
55.8	5,509	
100.0	9,867	المجموع

.2004/12/31

2004

.(2007) .

:

:(21)

مستوى المعنوية	اختبار	المتوسط*	المتغيرات المستقلة "حجم التجمع"	المتغير التابع
α	F	Mean		
0.004	4.286	18.014		
		09.407		
		07.359		
		09.176		
		15.668		

*

F

(2.7004)

F

(4.286)

 α

(95)

 $(\alpha \leq 0.05)$

0.05

0.004

(22)

(17.9%) والسبب في ذلك

(82.1%)

(24.3%)

(75.7%)

(%21.3) (%78.7)

.(%85.2) (%82)

2004 -

:(22)

-		-				
% /		% /		% /		
24.3	866	75.7	2,703	17.9	3,569	
21.3	800	78.7	2,952	18.8	3,752	
17.3	253	82.7	1,209	7.3	1,462	
14.8	1,653	85.2	9,512	56.0	11,165	
17.9	3,572	82.1	16,376	100.0	19,948	

.2004/12/31

2004

.(2007) .

:

(22)

%14.8

%24.3

1993)

)

(39

.(328 1987

.3

.0.05

:(23)

مستوى المعنوية	اختبار	المتوسط*	المتغيرات المستقلة "حجم التجمع"	المتغير التابع
α	F	Mean		
0.154	1.789	1.183		
		1.000		
		1.000		
		1.000		
		1.135		

*

F

(2.7004)

F

(1.789)

 α

(95)

 $(\alpha \leq 0.05)$

0.05

0.154

(7)

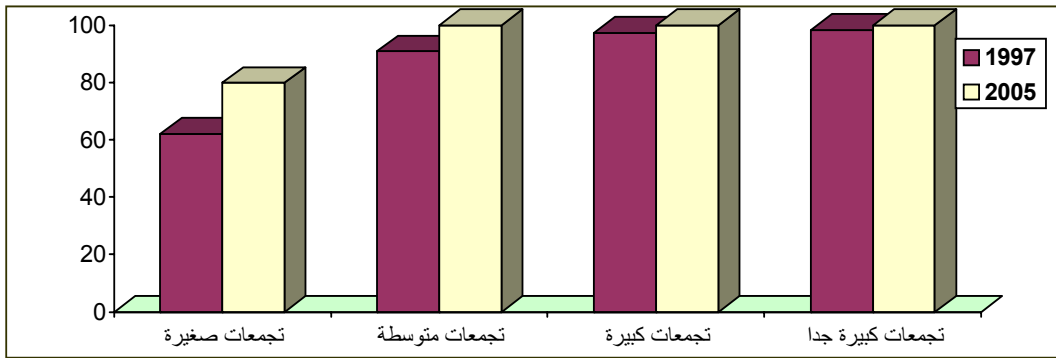
(%80.0)

2005

(%85.6)

(%100.0)

(7) : النسبة المئوية لتوزيع



(1) :
(2)

(7)

2005 %80

(7) (6)

2005 1997

:(24)

مستوى المعنوية	اختبار	المتوسط*	المتغيرات المستقلة "حجم التجمع"	
α	F	Mean		
0.048	2.723	1.493		
		1.385		
		1.250		
		1.000		
		1.427		

*

(2.723) F

 $(\alpha \leq 0.05)$ 0.048 α

(2.7004)

F

(95)

0.05

.(2008)

%37

(25)

2005

1997

%61

(%75.0)

%61.5

.1997

%26.7

:(25)

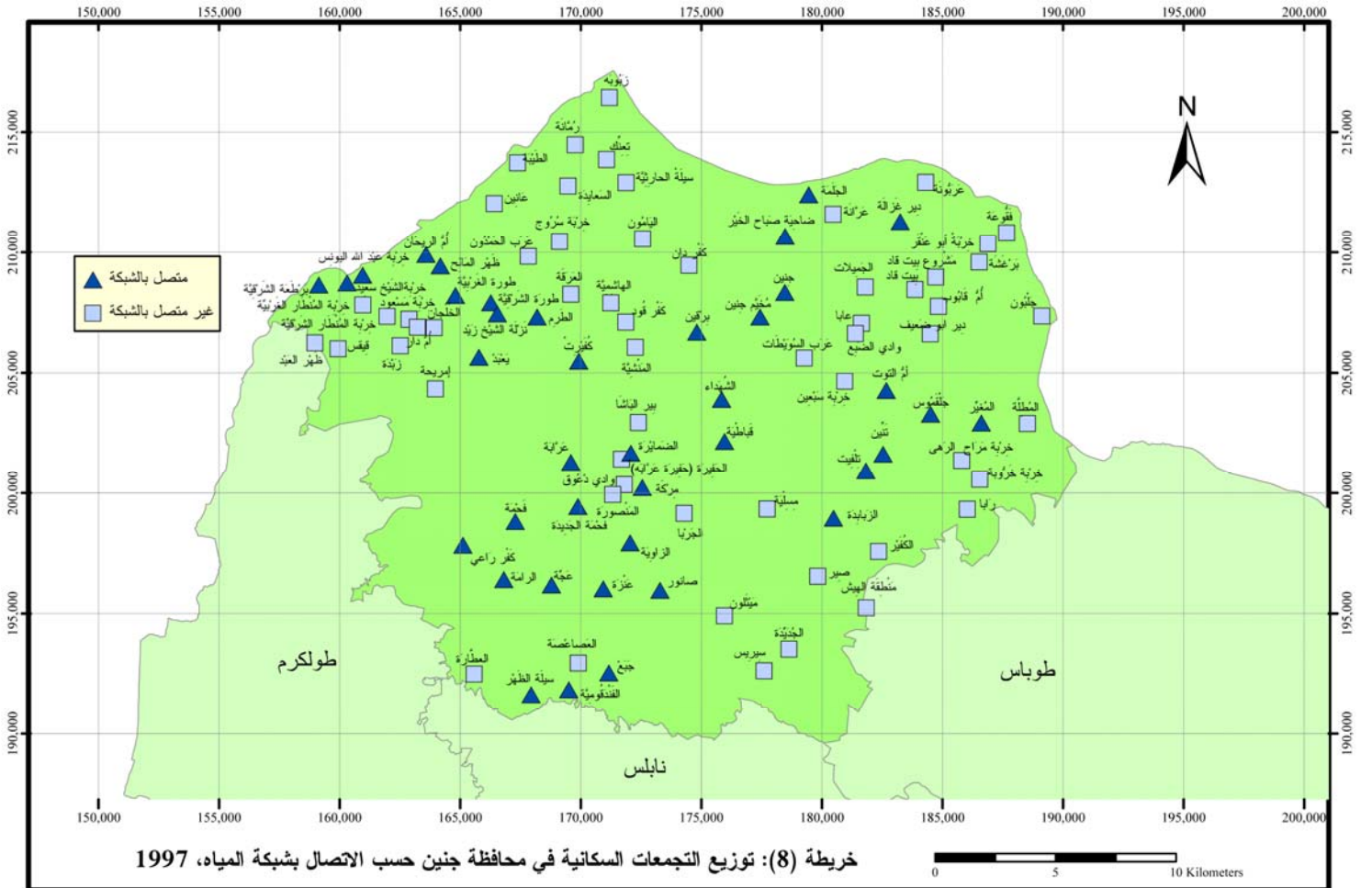
(2005 1997)

% / 1997	% / 2005	
32.5	55.4	
34.8	61.5	
65.8	75.0	
65.9	100.0	
37.0	61.1	

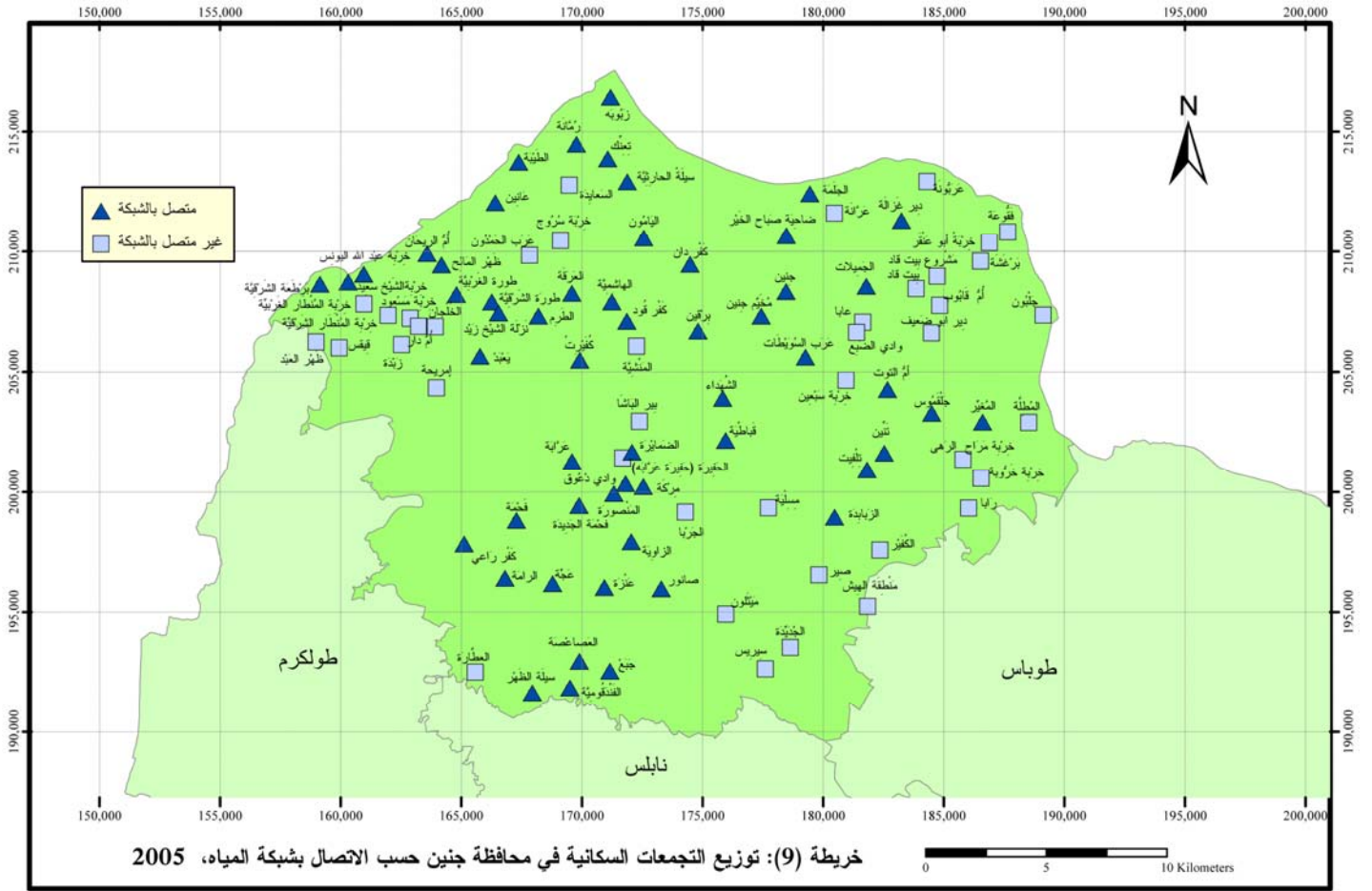
. - .1 . / .2000 . (1) :
.(2005) . (2)

(9) (8)

2005 1997



خريطة (8): توزيع التجمعات السكانية في محافظة جنين حسب الاتصال بشبكة المياه، 1997



خريطة (9): توزيع التجمعات السكانية في محافظة جنين حسب الاتصال بشبكة المياه، 2005

(%54.4) (26)

(%38.9)

%5.9

%1.1

:(26)

2005 -

			()		
100	1.5	1.5	58.5	38.5	
100	15.4	0.0	53.8	30.8	
100	0.0	0.0	50.0	50.0	
100	25.0	0.0	25.0	50.0	
100	5.6	1.1	54.4	38.9	

.(2005) .

:

:(27)

مستوى المعنوية	اختبار	المتوسط*	المتغيرات المستقلة "حجم التجمع"	المتغير التابع
α	F	Mean		
0.002	5.185	1.986		
		2.000		
		2.000		
		1.750		
		1.969		

•

F

(2.7004)

F

(5.185)

 α

(95)

 $(\alpha \leq 0.05)$

0.05

0.002

:

-

.1

()

.2

.3

.4

.(2008)

(28)

(%3.3)

2005

(%3.3)

(%1.5)

(%25.0)

(%0.0)

(2005 1997)

:(28)

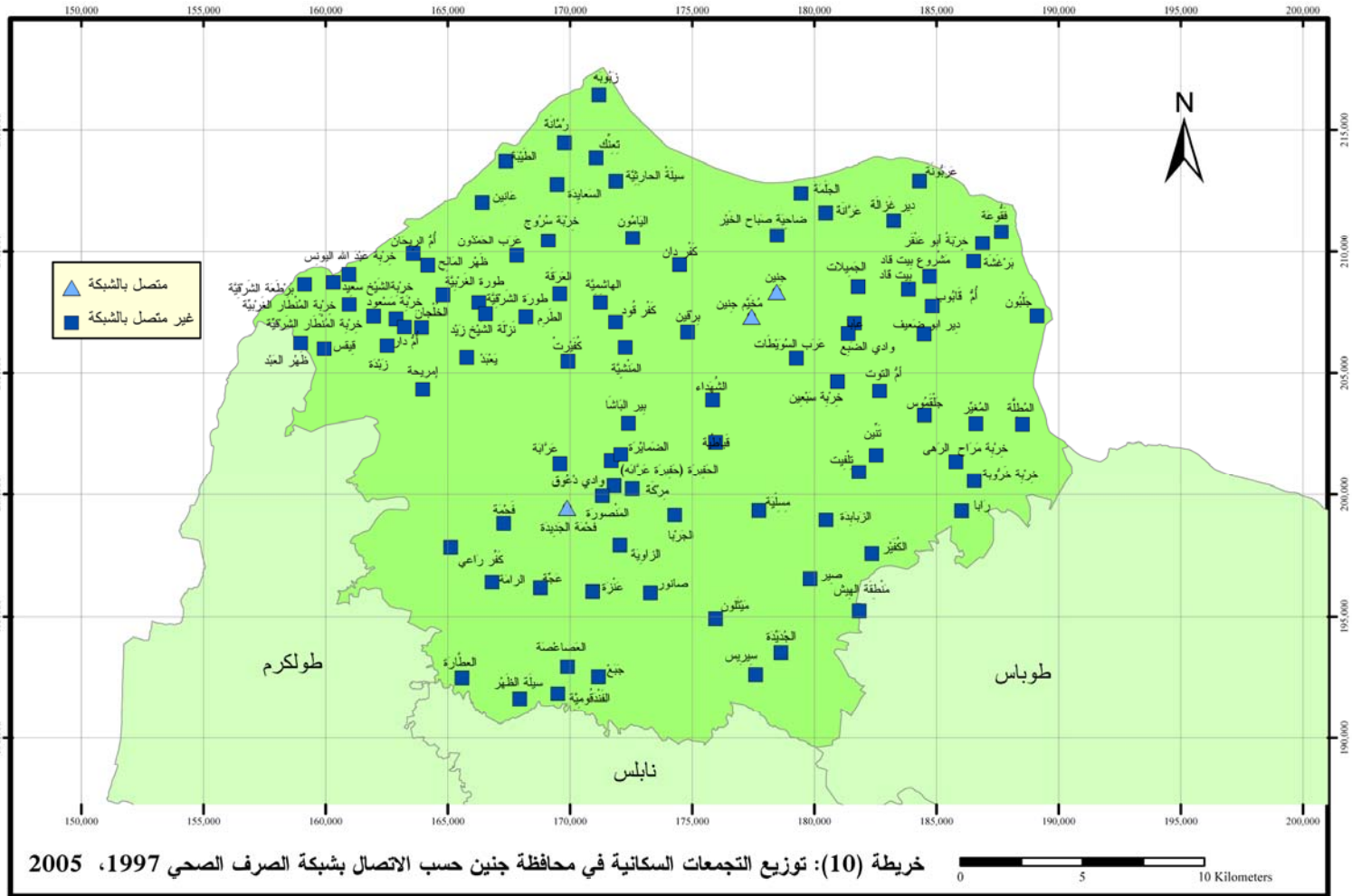
% /		
1997	2005	
1.4	1.5	
0.0	0.0	
0.0	0.0	
17.9	25.0	
2.5	3.3	

. - .1 . / .2000 . (1) :
 .(2005) . (2)

(10)

2005 1997

.(2008-4-28 .)



.

.4

(Average Nearest Neighbor)

.ArcMap 9.1

.(227 2000)

)

(

ArcGIS)

.(-Desktop Help- 9.2, 2008

:

$$R_n = 2\bar{d} \frac{\sqrt{n}}{a}$$

:

$$= R_n$$

$$= \bar{d}$$

$$(\quad) = n$$

$$= a$$

2.15

2.15

(231 -229 2000) 2.15

.(Lee & Wong, 2005, P 243)

(0.05)

.(206 -139 1997)

(Average Nearest Neighbor)

.Arc Map 9.1

Arc Map 9.1 (Average Nearest Neighbor) :(29)

1492.1	
1395.3	
1.06	/
1.3	()

1.06

1395.3

1492.1

80

1.06

()

0.05

0.05

1.3

(1.96)

.5

1997

.Arc Map 9.1

:(Spatial Autocorrelation Analysis)

1997

(139 2005)

.(Lee& Wong, 2005, P 260)

.(Lee & Wong, 2005, P 261)

(Moran's Index)

:

$$I = \frac{(N/S_0) \sum_i \sum_j w_{ij} (x_i - \mu)(x_j - \mu)}{\sum_i (x_i - \mu)^2}$$

() x : μ
 : w_{ij}
 : S_0
 : $\sum w_{ij}$

(Emerson, Lamb, and Quattrochi 2005, P.1579)

.1± (Moran's Index)

1- .1

1+ (Moran's Index)

1-

.(Lee& Wong 2005, P. 263, 264)

(Raster Image)

.(Emerson, Lamb, and Quattrochi 2005, 1579)

()

(0.05)

()

(Z score)

.(ArcGIS Desktop Help 9.2, 2008)

Arc Map 9.1

1997

.(Moran's Index)

(30)

/1997 -

:(30)

(Moran,s Index)

(Moran's Index)	
0.01	(Moran's Index)
0.019	
0.011-	
0.000201435	
2.1057586	()

0.01

(3)

2000

0.019

0.011-

(32)

()

2.1

()

.1.96

0.05

%5

:

:

.1

.

.2

.

.3

)

(

.

.4

)

(

.

.5

.6

()

.7

.8

.9

.10

.11

:

.1

.2

.3

.4

2007

.5

1997

2006

2004

.1(2003) . .1

. :
 "2

. : "

<http://www.mesc.com.jo/mesc-12-06-02.html>. Retrived 28-4-2008

: .() . .(1982) . .3

Greek convent and Goldberg- : .(1932) .1931 .4

presses

.() . . : .(1987) . .5

. :

_____ / _____ .(2000) . .6

. : .2 _____

2004 .(2007) . .7

. - .2004/12/31

_____) : - _____ .(1999) . .8

. : . (_____

- _____ /2005 - _____ .(2005) . .9
- . / .(2000) . .10
- . - .1
- _____ - _____ .(2001) . .11
- . - . " " .12
- <http://www.najah.edu/ARABIC/newsletter/issue69/reports/water.htm>. Date Retrieved
28-4-2008.
- (10) / .(1990) . .13
- . /
- . .(1929) . .14
- 18 .(1963) . .15
- . -8 /1962
- . :
- / .(1991) . .16
- .

		.(2002) .	.17
	:	.03/	
_____ "	2004-	1425	" .(2005) .
			.18
		.1	34

		-	.19
		http://www.pmd.ps/ar/climateaverage.htm . Date Retrieved 2009	
:	.1	_____ .(1997) .	.20
		"	.(2003) .
			.21
		:	"
			.(1964) .
			.22
:	.3	"	"
			.(1996) .
			.23
			" "
			.(1986) .
			.24
			.(1993) .
			.25
	-	/	

.	/	(1987) .	.26		
.		.	-	:	
.			.(1987) .		.27
.				.	
:	.1 .		.(1999) .		.28

1. ArcGIS Desktop Help 9.2- An overview of the spatial statistics toolbox. [http://webhelp.esri.com/arcgisdesktop/9.2/index.cfm?TopicName=Average_Nearest_Neighbor_\(Spatial_Statistics\)](http://webhelp.esri.com/arcgisdesktop/9.2/index.cfm?TopicName=Average_Nearest_Neighbor_(Spatial_Statistics)). Date Retrieved 6-5-2008.
2. Ehrlich, S & Gyourko, J. (2000) "Changes in the scale and size distribution of US metropolitan area during the twentieth century". *Urban Studies*. 37 (7): 1063-1077.
3. Emerson, Charles W; Lamb, Nina Siu- Ngan. and Quattrochi, Dale A. (2005). "A comparison of Local variance, fractal dimension, and Moran's I as aids to multispectral image classification". *International Journal of Remote Sensing*. Vol. 26. No. 8. P. 1575-1588.
4. Garmestani, Ahjond S; Craig, R. Allen and K. Michael Bessey. (2005). "Time-series Analysis of Clusters in City Size Distributions". *Urban Studies*. 42 (9): 1507-1515.
5. Lee, J & Wong, D.W.S (2005). *Statistical analysis with ArcView GIS*. New Jersey: Jon Willy.
6. Morill, Richard. (1993). "Development, diversity, and regional demographic Variability in the U.S". *Annals of the Association of American Geographers*. 83:407.
7. Palestinian Central Bureau of Statistics 1997. Numbers of Establishment Locality and status. 1997. http://www.pcbs.gov.ps/Portals/_pcbs/phc_97/jen_t15.aspx. Date Retrieved 25, 2007.

8. Palestinian Central Bureau of Statistics. Projected Mid- Year Population Territory by Governorate (2001-2006).
http://www.pcbs.gov.ps/Portals/_pcbs/populati/demdl.aspx. Date Retrieved 1-4-2008.
9. Pedersen, Jon. (1997). West Bank and Gaza Living conditions: Are refugees different. (The answer is: not very much). Fafo, Paper prepared for the Harvard Refugee Project.
10. Shukri, Ibrahim M. & Alshuwaikhat, Habib M. (1996). "City-size distribution in the Saudi Arabian urban system". *International Planning Studies*. Vol. 1. Issue 2. p185.
<http://web.ebscohost.com/ehost/detail?vid=19&hid=104&sid=7d45e4c0-a902-4d70-b72b-c958f7f4f983%40sessionmgr107>. Retrived 10-5-2007
11. Song, Shunfeng & Zhang, Kevien. (2002). "Urbanisation and City Size Distribution in China". *Urban Studies*. 39 (12): 2317-2327.
12. Survey of Palestine, 1945, 1946, Anglo- American Inquiry Committee. Palestine: Government Printer.
13. Week, John R, Arthur Getis. (2004). "The Fertility Transition in Egypt: Intraurban Patterns in Cairo". *Annals of the Association of American Geographers*. 94:74.